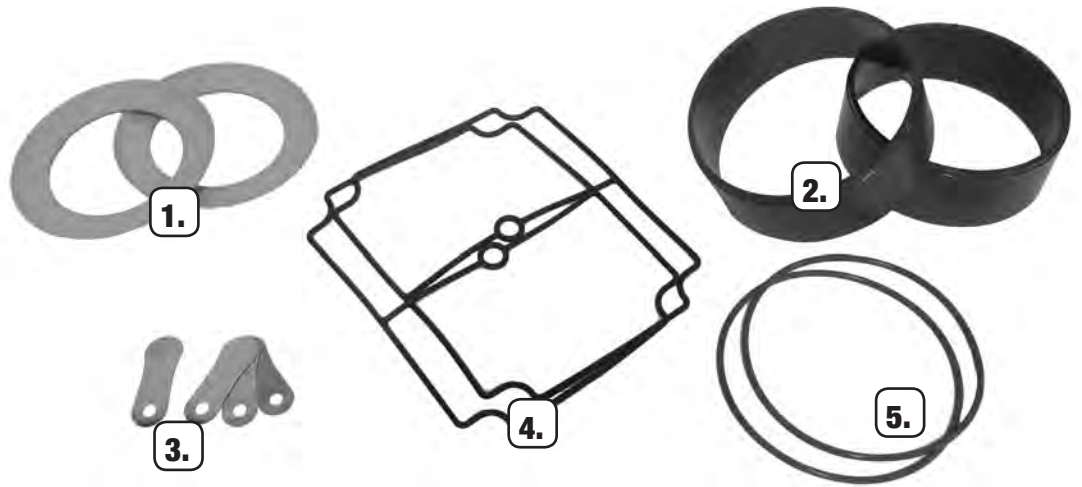


Stratus ERP Series Repair Kit Instructions

ERP Repair Kit

1. Piston Cups
2. Piston Rings
3. Leaf Valves
4. Head Gaskets
5. O-ring Gaskets

*Repair kit contents may vary depending on your ERP compressor.



WARNING: Electrical shock hazard. Disconnect electrical supply before performing maintenance. Failure to follow these instructions may result in death, fire or electrical shock.



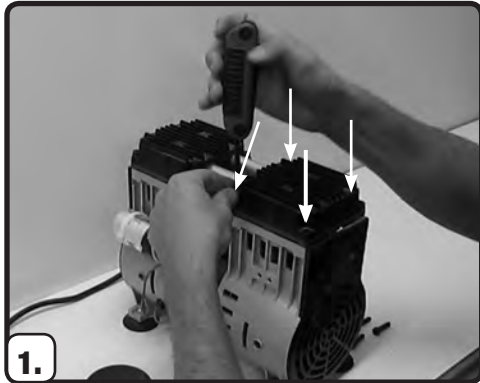
WARNING: Injury hazard. Product surfaces become very hot during operation, allow surfaces to cool before handling.



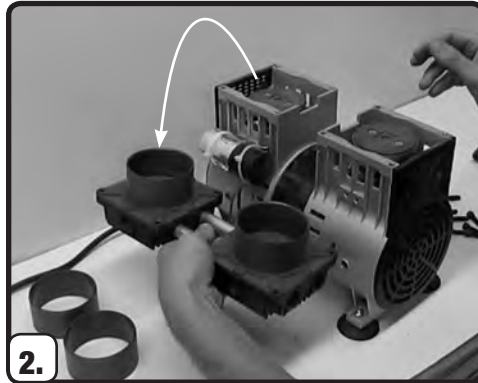
WARNING: Do not use oil to lubricate parts. ERP compressors use an oil less design. Using oil may result in failure of the unit.

Before beginning, you will need:

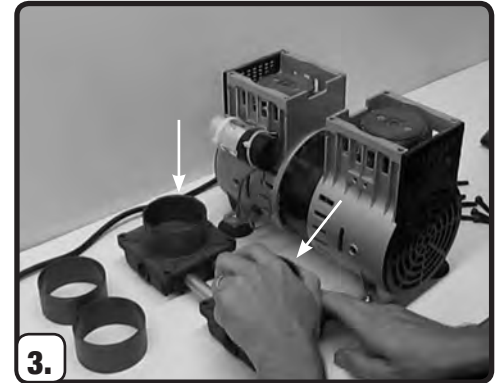
1. #2 Philips screwdriver
2. 4mm or 5mm Allen wrench
3. Utility knife
4. Clean work space



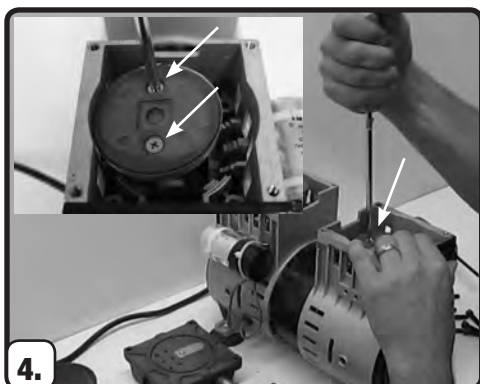
1. Unplug unit and remove the screws from the head of the compressor using an Allen wrench



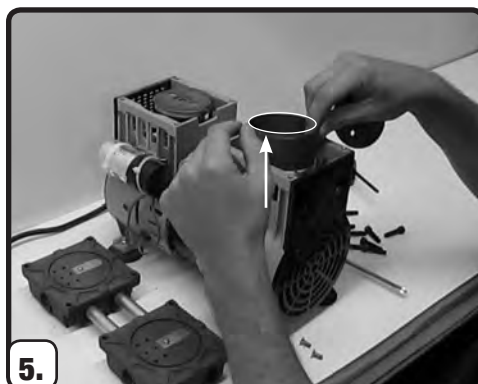
2. Remove head of unit, note the orientation to re-install properly



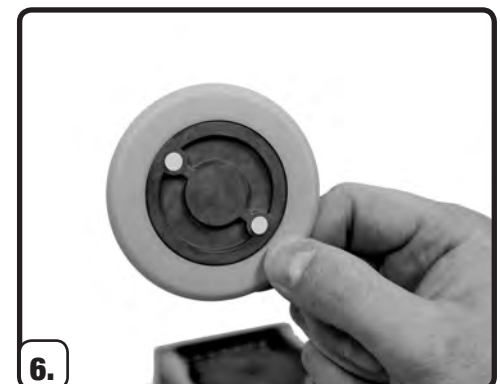
3. Remove old piston rings and discard



4. Remove the two Phillips screws from the top of the piston and remove the retainer plate

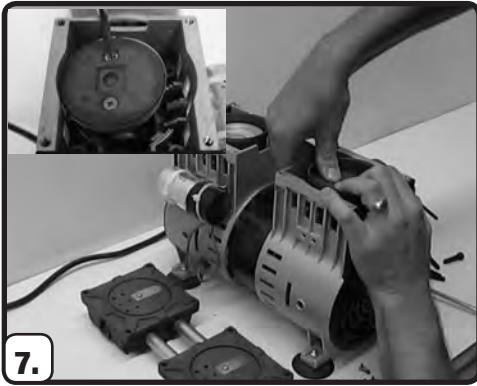


5. Set new piston ring on piston, note the grooved side must face upwards

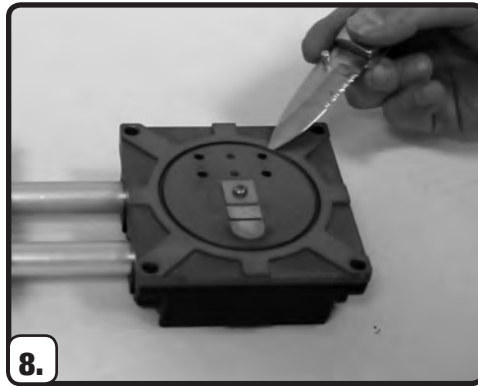


6. Set new piston cup onto retainer plate, these parts will sit flat against each other

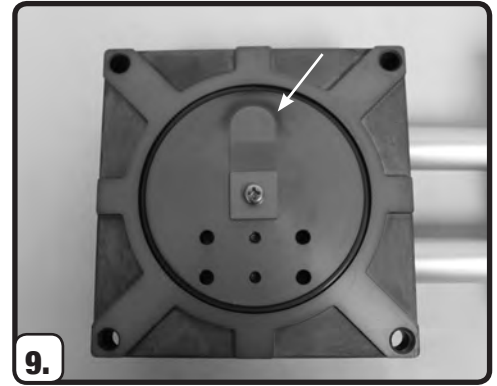
Stratus ERP Series Repair Kit Instructions



7. Press retainer plate into piston ring and replace Phillips screws. Use of low-strength thread locking compound recommended.
*Repeat steps 4-7 for dual piston compressors



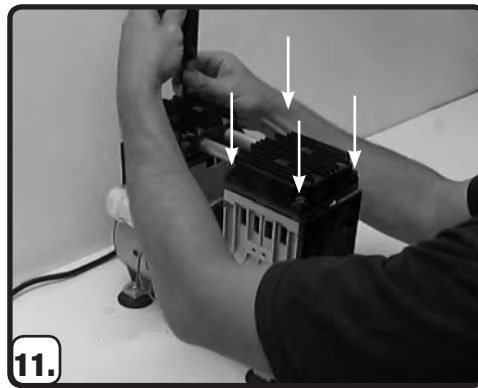
8. Remove the o-ring gaskets from the head assembly and press a new gasket into the groove.



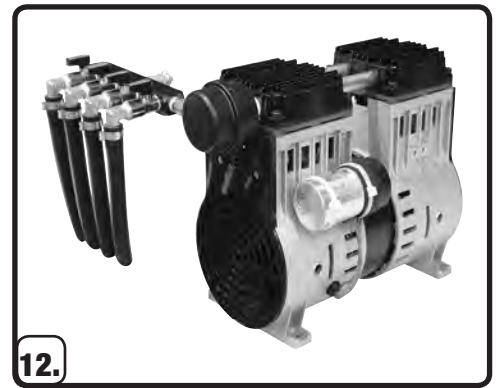
9. *Before reassembly, inspect the head unit for damage or wear. The repair kit includes new head gaskets and leaf valves but these parts do not often need replacement.



10. Replace the head of the compressor ensuring the correct, original orientation.



11. Tighten the Allen screws on the head of the unit.



12. Test your compressor to ensure proper operation then reinstall the unit to your aeration system. ***Note**

***Note:** Before putting the unit back into service it should be run for five minutes and the cylinder head screws should be checked for tightness. If these screws come loose during operation the unit will experience extensive damage and voids the warranty of the unit.

- Install the air intake filter into inlet port and leave outlet port open. It is not necessary to connect outlet plumbing connections at this point.
- Plug in unit and run for five minutes listening for any odd noises or clicking sounds. If any of these noises are heard, unplug unit immediately.
- After running for five minutes, remove head and check the cylinder head screws. Tighten the screws and reassemble head to put unit back into service.

Check that all external accessories such as relief valves and gauges are not damaged before re-operating product.



Visit easypro.com/resources
-or-
[youtube.com/watch?v=4AI0WLSJLao](https://www.youtube.com/watch?v=4AI0WLSJLao)
for a video walkthrough of this rebuild.